



Oxford Storyland Readers
Enhanced edition

Level 3

Bip's Visit



DF Green

OXFORD

UNIVERSITY PRESS

Oxford University Press is a department of the University of Oxford.
It furthers the University's objective of excellence in research, scholarship,
and education by publishing worldwide in

Oxford New York

Auckland Cape Town Dar es Salaam Hong Kong Karachi
Kuala Lumpur Madrid Melbourne Mexico City Nairobi
New Delhi Shanghai Taipei Toronto

With offices in

Argentina Austria Brazil Chile Czech Republic France Greece
Guatemala Hungary Italy Japan South Korea Poland Portugal
Singapore Switzerland Thailand Turkey Ukraine Vietnam

Oxford is a registered trade mark of Oxford University Press

© Oxford University Press 2004

First published 1994

This enhanced edition 2004

This impression (lowest digit)

7 9 10 8

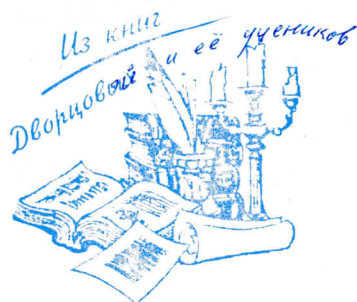
All rights reserved. No part of this publication may be reproduced,
stored in a retrieval system, or transmitted, in any form or by any means,
without the prior permission in writing of Oxford University Press,
or as expressly permitted by Law, or under terms agreed with the appropriate
reprographics rights organization. Enquiries concerning reproduction
outside the scope of the above should be sent to the Rights Department,
Oxford University Press, at the address below

You must not circulate this book in any other binding or cover
and you must impose the same condition on any acquirer

Illustrated by Tsui Chi Hung

ISBN-13: 978-0-19-596953-5

ISBN-10: 0-19-596953-7

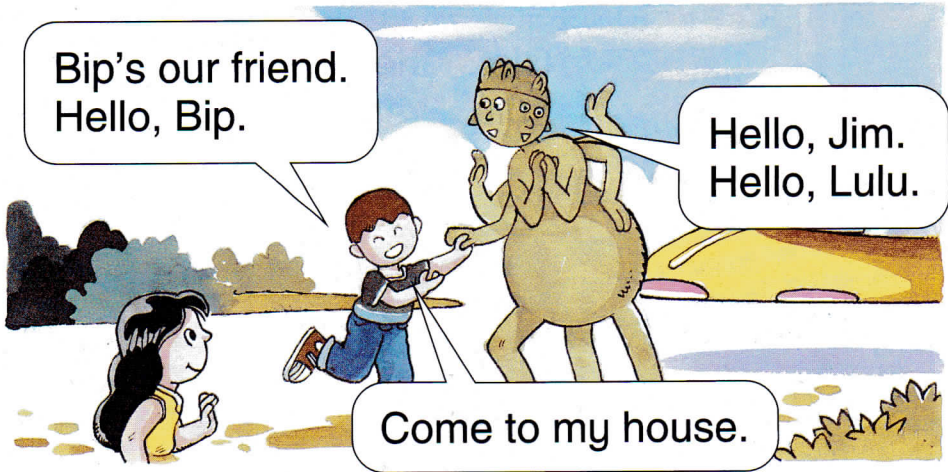
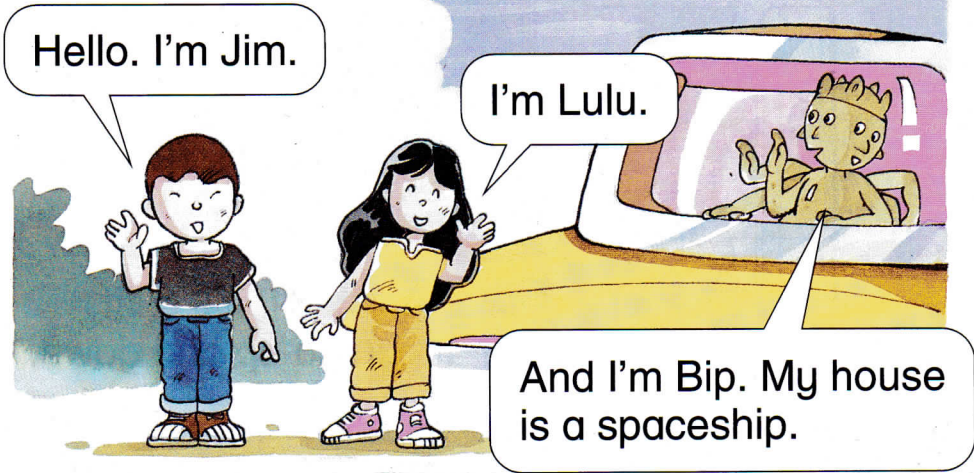


Printed in Hong Kong

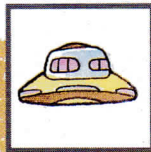
Published by Oxford University Press (China) Ltd
18th Floor, Warwick House East, Taikoo Place, 979 King's Road, Quarry Bay
Hong Kong



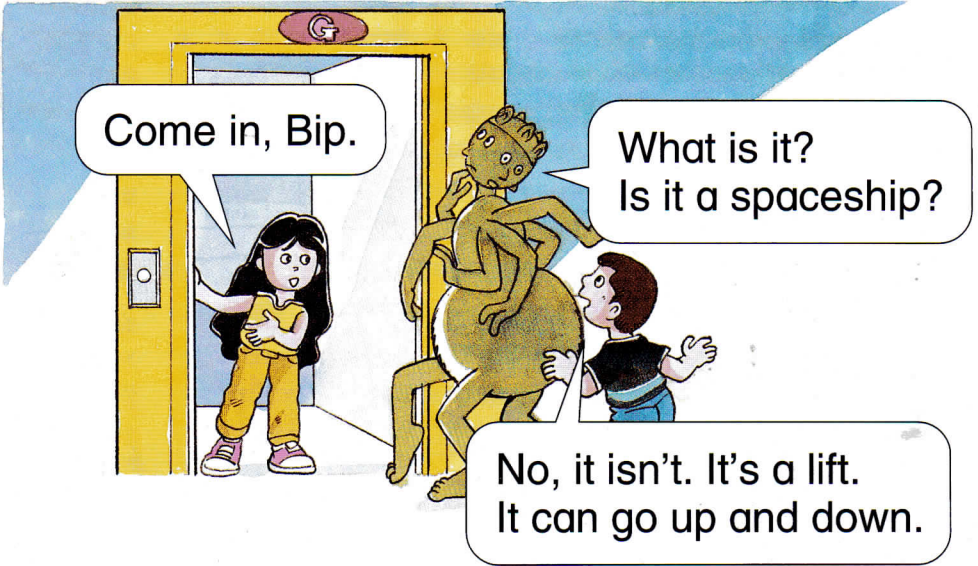
Bip's Visit



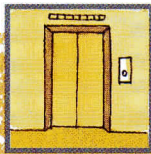
Jim, Lulu and Bip are in the park.



a spaceship



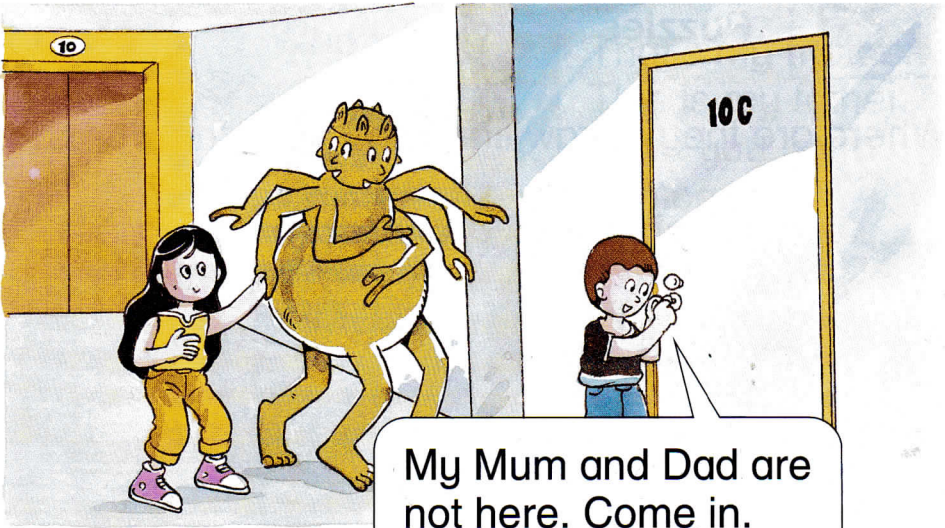
Jim, Lulu and Bip are in the lift.



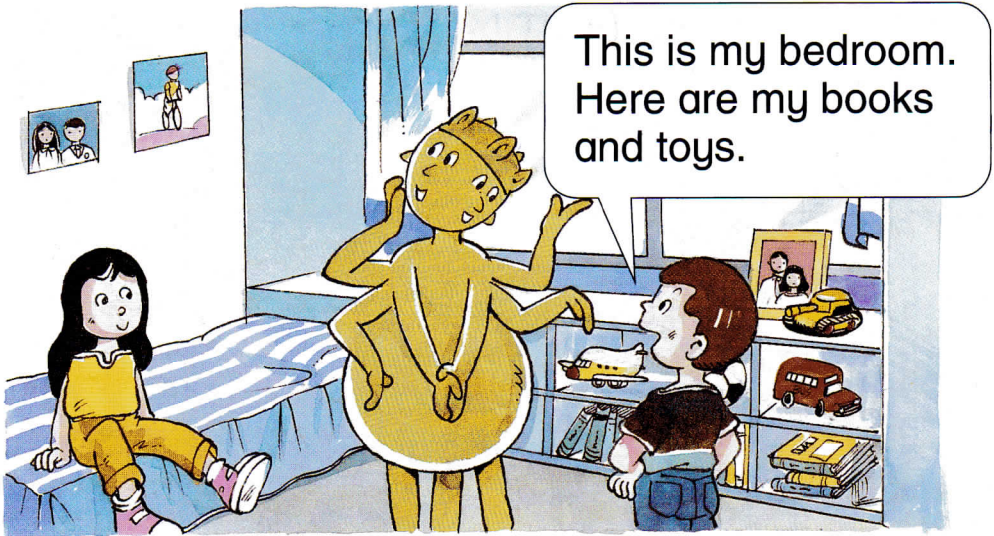
a lift



press



My Mum and Dad are not here. Come in.

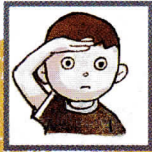


This is my bedroom. Here are my books and toys.

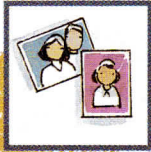
Jim's bedroom is big. Bip looks at Jim's photographs.



a bedroom



looks



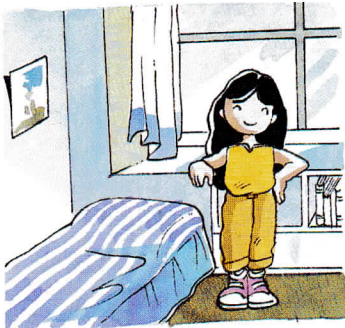
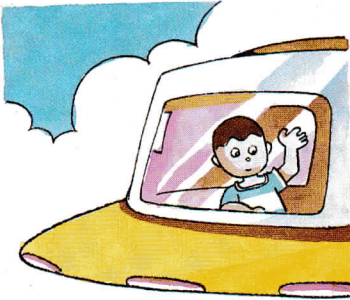
photographs



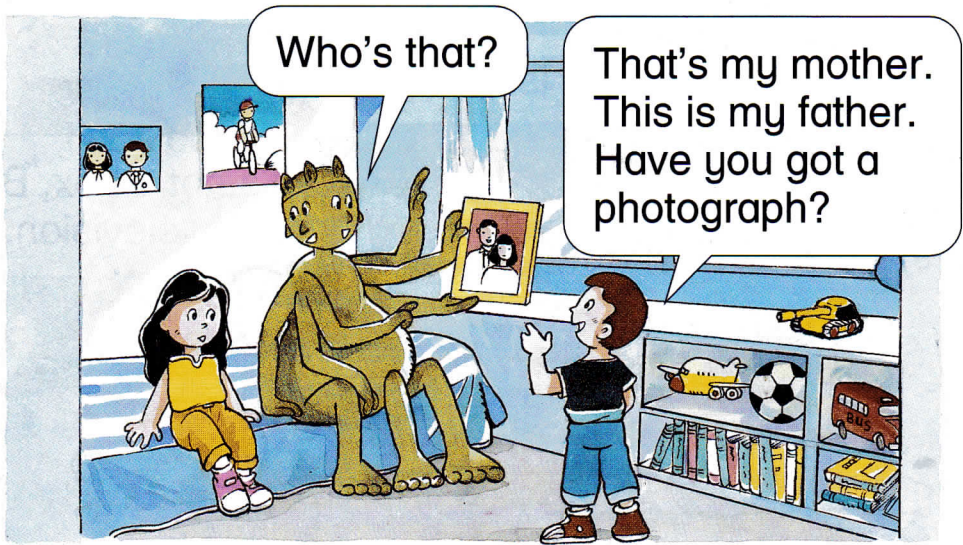
Puzzles

Where are they? Draw lines and write the words.

spaceship lift bedroom park



- a) Jim's Mum and Dad are in the _____.
- b) Jim is in the _____.
- c) Lulu is in the _____.
- d) Bip is in the _____.



Who's that?

That's my mother.
This is my father.
Have you got a
photograph?

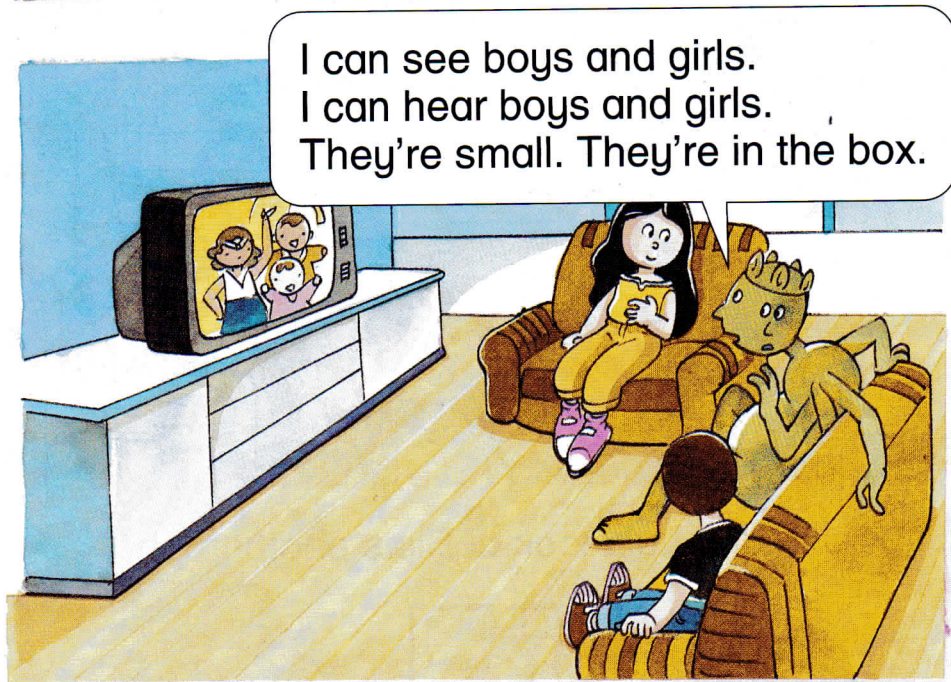
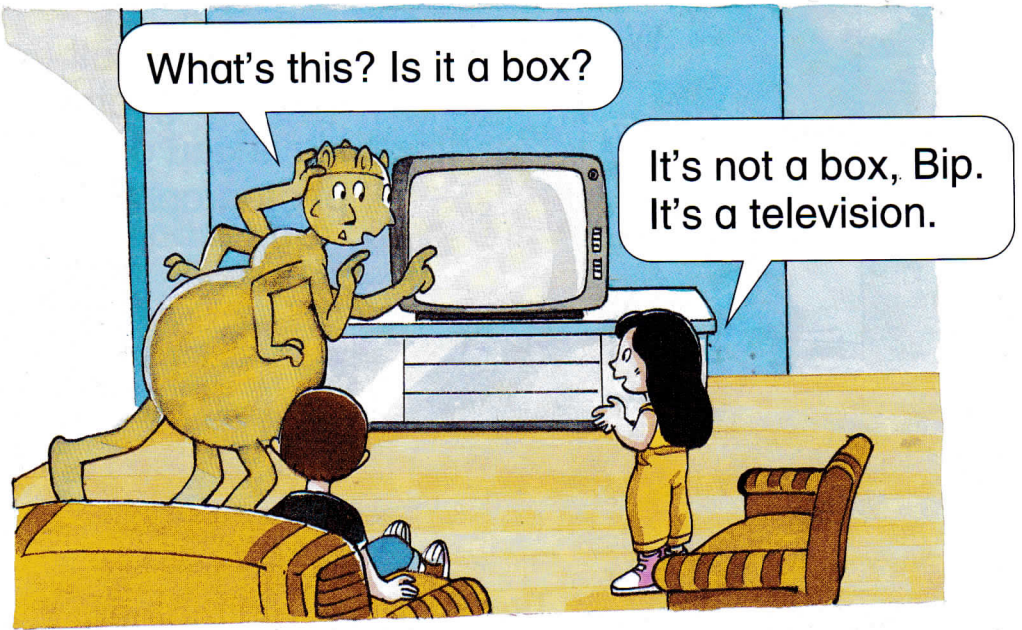


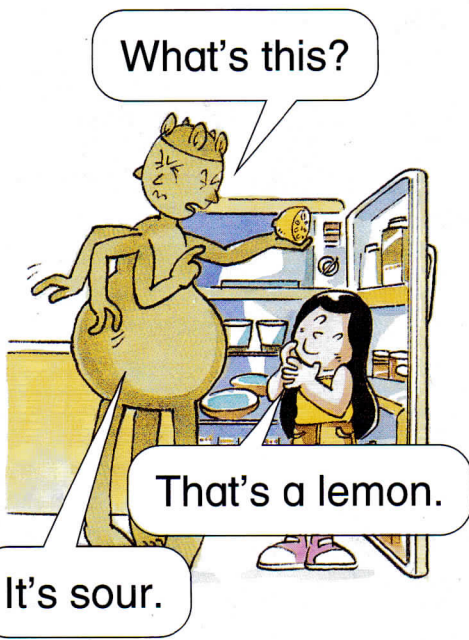
Look! This is my mother,
this is my father and
here's my sister.

Jim and Lulu look at Bip's photograph.



a photograph





Bip likes chocolate. He does not like lemons.



a kitchen



noodles



Puzzles

1. Look at the pictures. Write the right words.

2. Find these words.

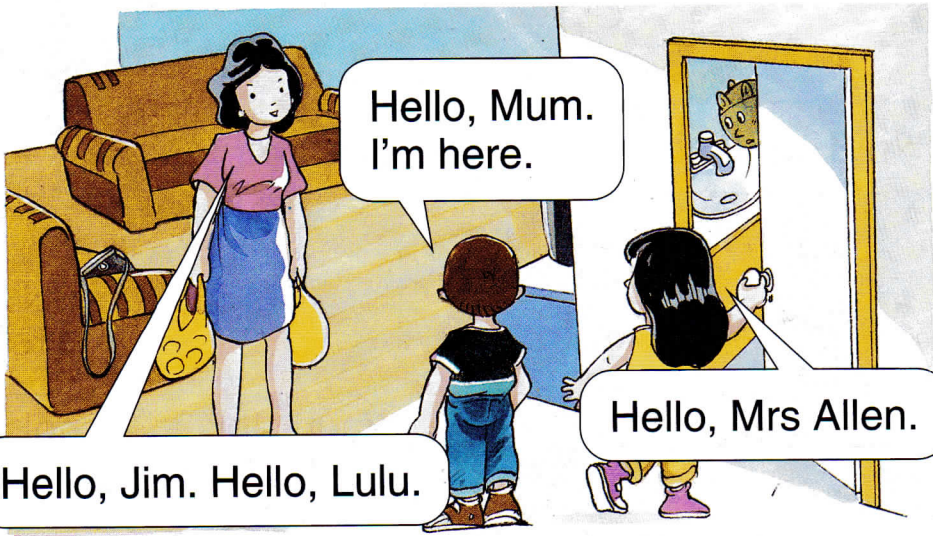
- ✓ boys
- ✓ girls
- ✓ noodles
- sour
- sweet
- mother
- sister
- father
- box

| | | | | | | | | | |
|---|---|---|---|---|---|---|---|---|---|
| C | B | L | R | E | K | U | T | G | B |
| N | O | O | D | L | E | S | A | S | E |
| D | Y | X | T | E | L | I | B | O | X |
| J | S | E | W | V | F | S | O | U | I |
| B | U | S | E | G | A | T | E | R | G |
| C | O | W | T | D | T | E | H | E | I |
| D | F | E | E | T | H | R | K | J | R |
| S | U | E | O | T | E | O | X | U | L |
| M | O | T | H | E | R | N | R | G | S |

Hello, Jim. Where are you?



Oh, no! It's my Mum.
Go in the bathroom, Bip.

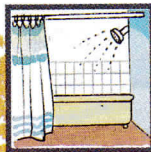


Hello, Mum.
I'm here.

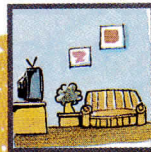
Hello, Mrs Allen.

Hello, Jim. Hello, Lulu.

Jim's Mum is in the sitting-room.



a bathroom



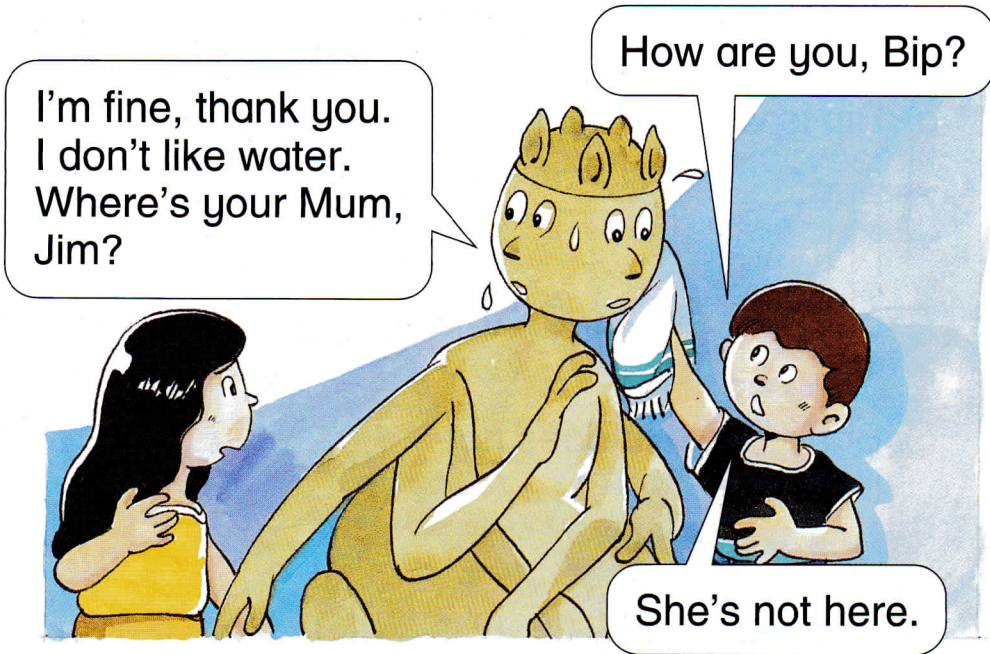
a sitting-room



Bip is wet. He is unhappy.



unhappy



Bip does not like water.



Puzzles

1. Look at the pictures. Write the right words.

unhappy hungry wet

a) Bip is _____.

b) Lulu is _____.

c) Jim is _____.



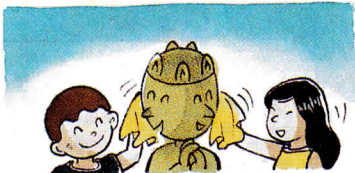
2. The sentences are in the wrong order. Look at the pictures and write the story.

a) Bip is wet. He cannot talk.



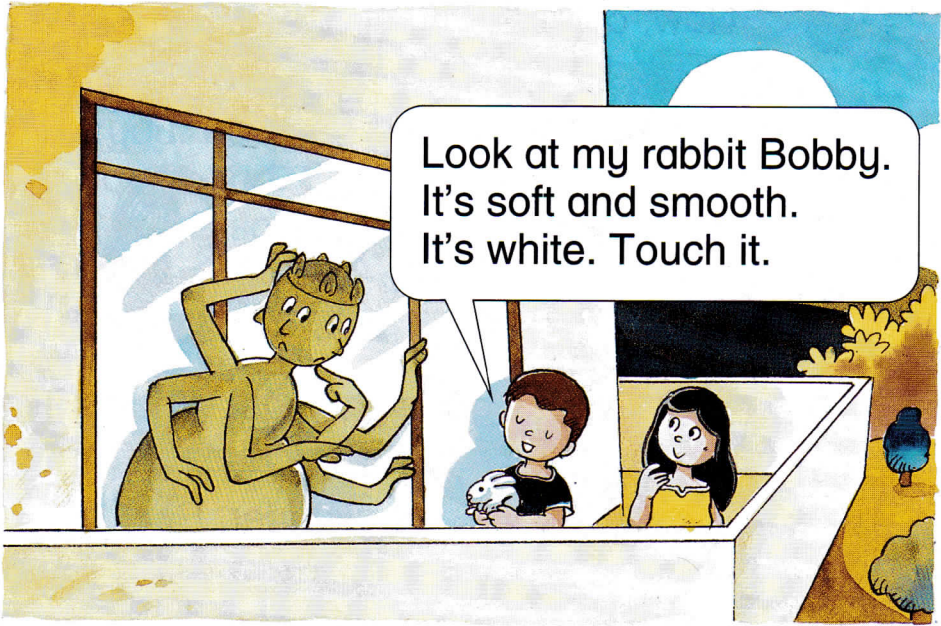
b) Bip is in the bathroom.

c) Bip is fine. He does not like water.

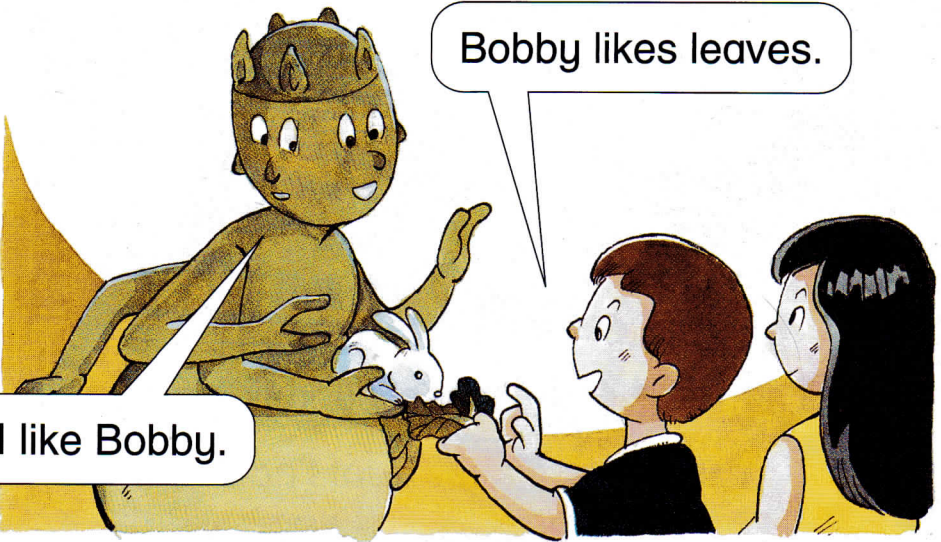


d) Jim and Lulu help Bip.





Look at my rabbit Bobby.
It's soft and smooth.
It's white. Touch it.

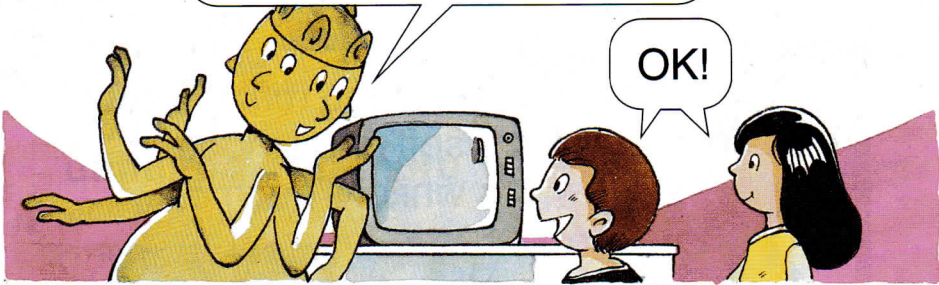


Bobby likes leaves.

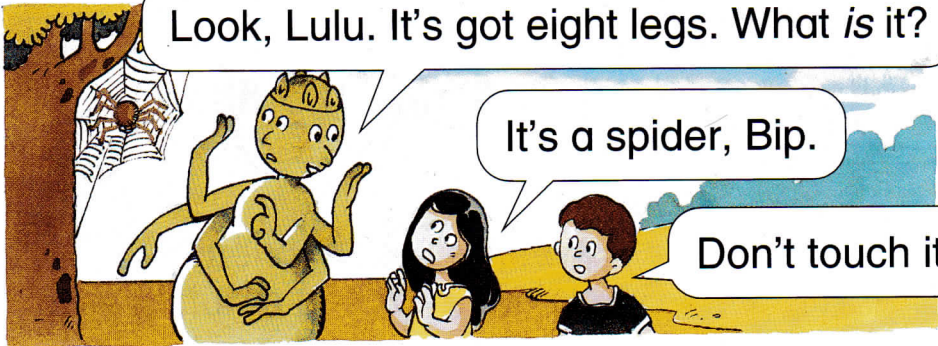
I like Bobby.

Bip likes Bobby. Bobby likes Bip, too.

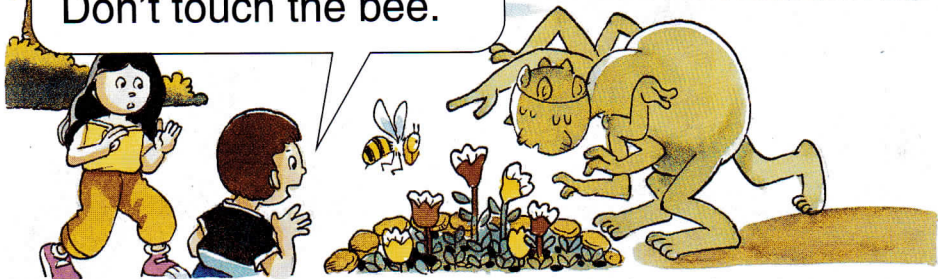
Now, come to *my* house.



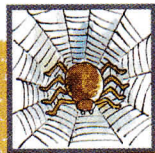
Look, Lulu. It's got eight legs. What *is* it?



Smell the flowers, Bip.
Don't touch the bee.

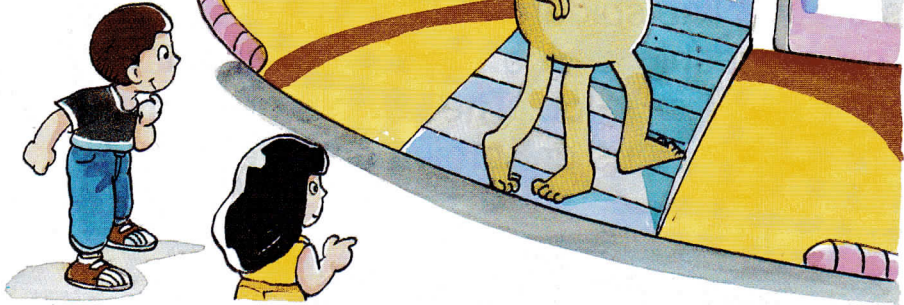


They look at the insects and flowers.

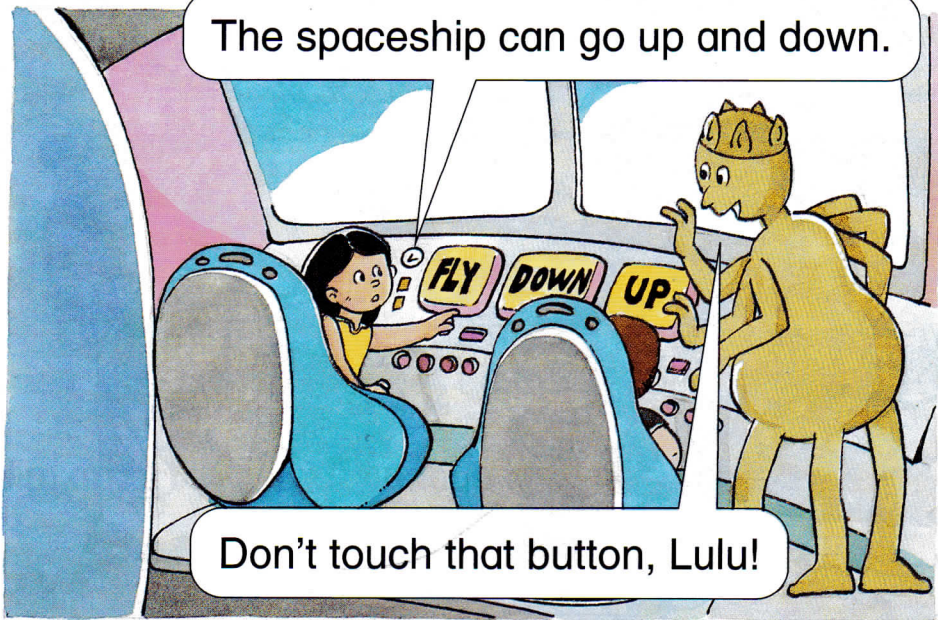


a spider

I like your house. I like my house, too. Come in. Look at my spaceship.



The spaceship can go up and down.



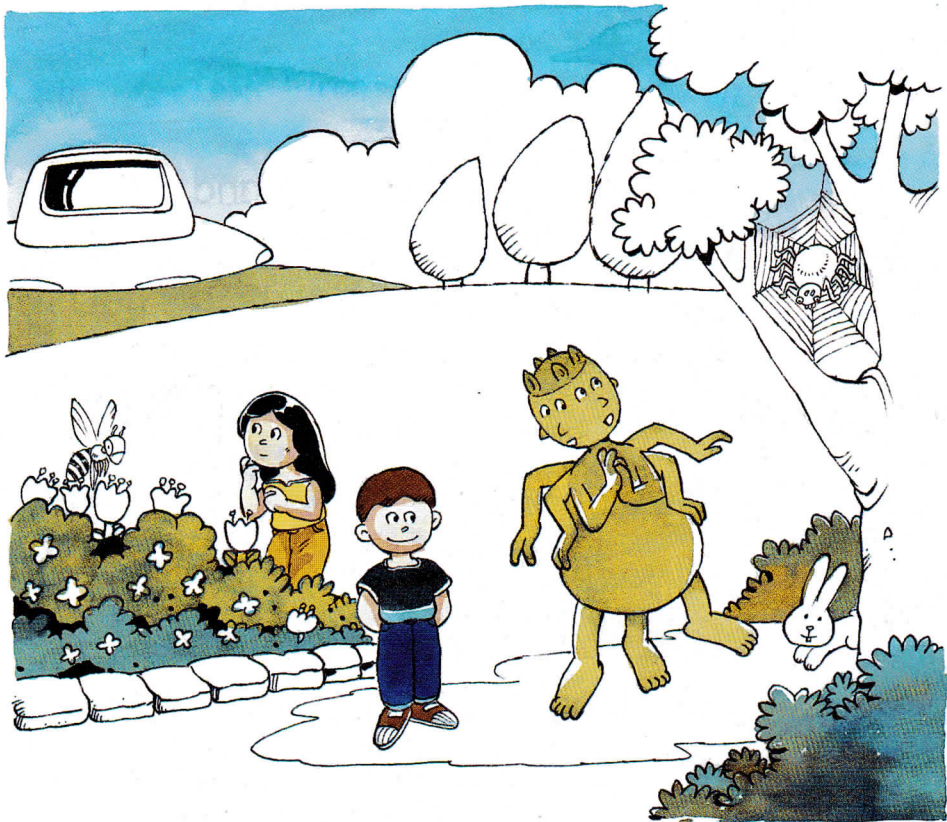
Lulu looks at the buttons in the spaceship.

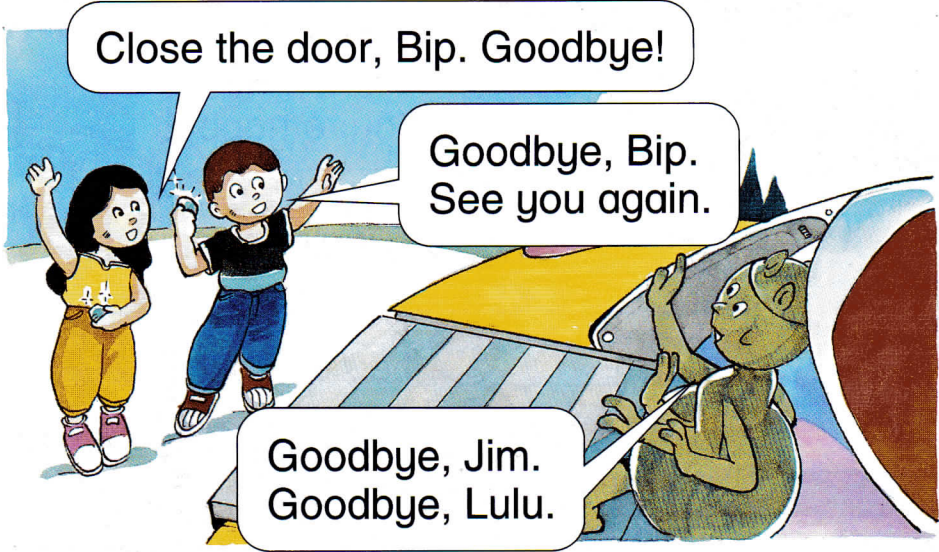


Puzzles

Read the sentences. Colour the picture.

Bip, Lulu and Jim are in the park. They can see a spider, a bee, a rabbit and a spaceship. The bee is brown. The spider is black. The rabbit is white. The spaceship is blue. They can see some flowers and some trees, too. The flowers are red and yellow. The trees are brown and green.





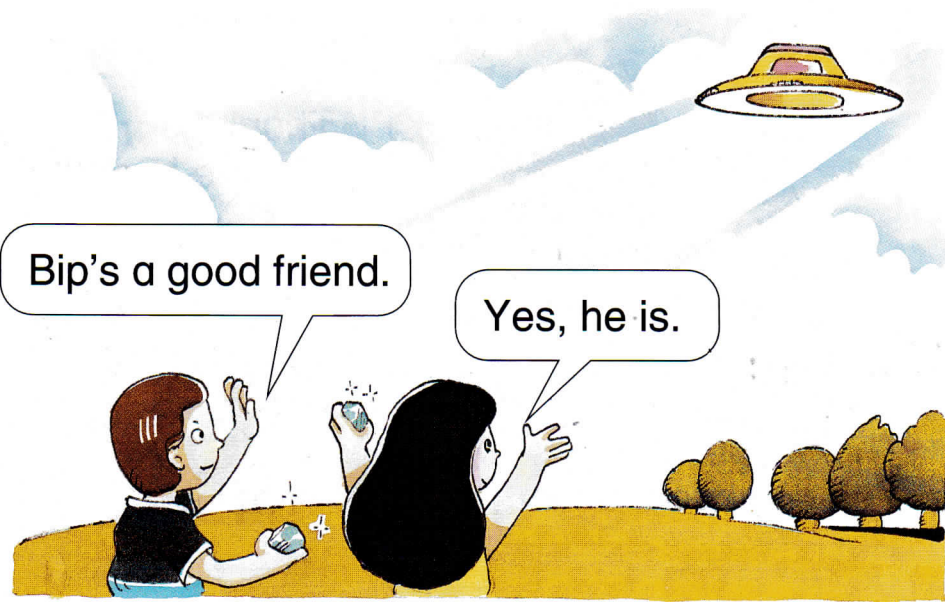
Jim and Lulu wave goodbye to Bip and his spaceship.



rocks

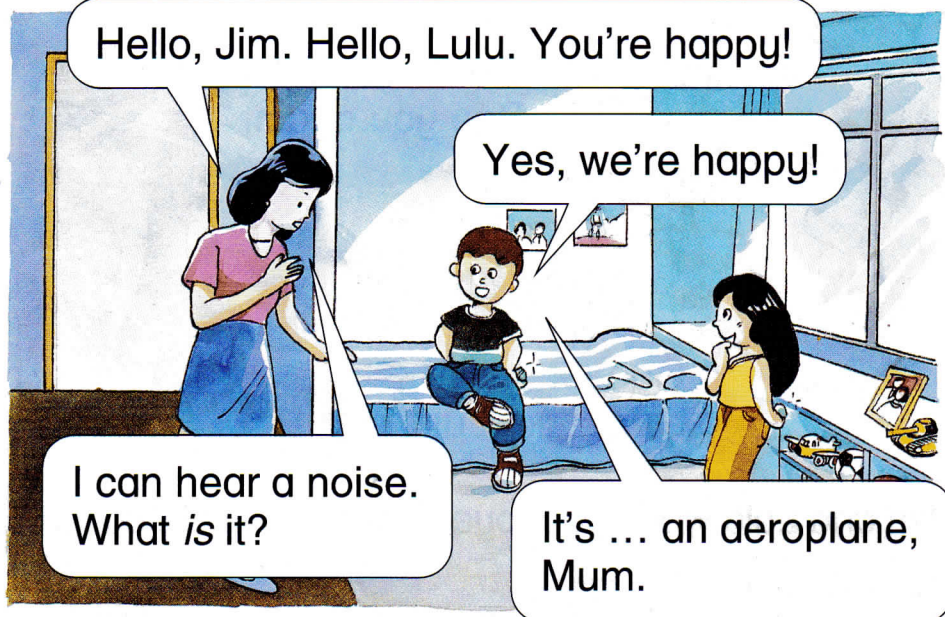


wave



Bip's a good friend.

Yes, he is.



Hello, Jim. Hello, Lulu. You're happy!

Yes, we're happy!

I can hear a noise.
What *is* it?

It's ... an aeroplane,
Mum.

Jim and Lulu are happy.
Jim's rock is not an aeroplane!



Questions

- Page 1
- Bip's house is **a boat/an aeroplane/ a spaceship.**
 - Bip is Lulu and Jim's _____.
 - Where are Bip, Lulu and Jim?

- Page 2
- Say *Yes* or *No*.
The lift can go up and down.

- Page 3
- Are Jim's Mum and Dad in the house?
 - Is Jim's bedroom big?
 - Bip looks at Jim's **books/ photographs/toys.**

- Page 5
- Lulu, Jim and Bip are in Jim's _____.
Say *Yes* or *No*.
 - Bip has a brother.
 - Bip has a sister.

- Page 6
- Bip likes the _____.
 - What can Bip see?
 - What can Bip hear?

- Page 7
- The children are in the _____.
 - Is Bip hungry?
 - Bip likes **lemons/chocolate.** He does not like **lemons/chocolate.**

- Page 9
- Who is in the sitting-room?
 - Bip goes in the _____.

Page 10 Say Yes or No.

- a) Jim and Lulu are hungry.
- b) Bip is wet.
- c) Bip is happy.

Page 11 a) Can Bip talk?

- b) Does Bip like water?

Page 13 a) What colour is Jim's rabbit?

- b) The rabbit's name is _____.
- c) Bip **does not like/likes** Jim's rabbit.

Page 14 *True or false?*

- a) A spider has eight legs.
- b) Bip says, 'Don't touch the bee.'
- c) Bip, Lulu and Jim look at the insects and flowers.

Page 15 a) Lulu and Jim are in Bip's _____.

- b) Lulu looks at the _____ in the spaceship.

Page 17 a) Bip has two _____.

- b) Jim and Lulu wave _____ to Bip.

Page 18 a) Is Bip a good friend?

- b) Are Lulu and Jim happy?
- c) Is Jim's rock an aeroplane?

| Story | Letter sound | Page | Target vocabulary |
|----------------------|--------------|--|--|
| <i>My Friend Bip</i> | th | | |
| | *f | | |
| <i>Bip's Visit</i> | t | p. 2 p. 3 p. 6 p. 10 p. 11 p. 13 p. 14 p. 15 p. 16 | lift toys television wet talk, water rabbit, soft, touch insects button trees |
| | *s | p. 1 p. 2 p. 5 p. 6 p. 7 p. 9 p. 13 p. 14 p. 16 p. 17 | spaceship press sister small sour, sweet sitting-room soft, smooth spider, insects some see |
| <i>Billy and Tom</i> | l | | |
| <i>At the Zoo</i> | ch | | |

* The *f* sound is previously introduced in Level 2 *Grandma's Photos*.

The *s* sound is previously introduced in Level 1 *This is Ping*.



Oxford Storyland Readers

Enhanced edition

Oxford Storyland Readers (Enhanced edition) is a 12-level series featuring interesting and lively stories. Each book for Levels 7 to 12 contains a thematically related factual section to support cross-curricular learning. Picture dictionaries, comprehension questions, games and puzzles reinforce target language and develop reading skills. To encourage young learners to read, the **Enhanced edition** includes wide and varied resources:

- a new phonics guide at the end of each book facilitates phonics learning in context
- **CD-ROMs** with interactive phonics games and audio recordings encourage independent learning
- **teacher's editions** contain useful teaching notes and answer keys
- **online teacher's resources** support shared reading activities with downloadable worksheets and teaching ideas
- **web-based parent's guides** support reading at home

Oxford Storyland Readers (Enhanced edition) is also available in packs (4 readers and CD-ROMs).

Level 1

This is Ping
You're a Cat!
Anna at the Supermarket
The Picnic

Level 2

The Birthday Party
The Red Kite
Grandma's Photos
Daddy's Present

Level 3

My Friend Bip
Bip's Visit
Billy and Tom
At the Zoo

Level 4

Where is Boo?
I Can Swim
Superboy
Joey the Bird

Level 5

Mickey Monkey
Charlie
Lucky
Jojo

Level 6

At the Beach
The Space Museum
Gary's Lost!
The Circus

Level 7

The Lost Cat
The Biggest Dad
The Garden Fairy
Mrs Mott

Level 8

The Giant's Garden
Fireman Bill and the
Dragon
The Fat Prince and the
Angry Man
Beauty and the Beast

Level 9

Amy and the Red Box
Hansel and Gretel
Barney the Policeman
Jo Tells Stories

Level 10

The Girl from the Sea
Typhoon!
The Elephant Rock
Save the Animals!

Level 11

The School Ghost
The Younger Brother
The Fishing Hook
How Sam Grew!

Level 12

The Snow Queen
Happy and the Plums
The Story of Tea
Take It Away!

OXFORD
UNIVERSITY PRESS

www.oupchina.com.hk

ISBN 0-19-596953-7



9 780195 969535